



ORION D&B



*Realize the Perfection*

Experiencing the skills  
Since 2012



## ABOUT US

We are manufacturing quality and innovative FRP Doors for all needs. Viz bedrooms, toilets and any type of door needs. We are using premium quality raw materials from quality material supplier and our models are unique and innovative. The service and after sales service strategy of our establishment are transparent and satisfied through thousands of clients all over Kerala since inception.

Our marketing - production - sales and service are the best organized methodology used by advance characteristics with world class business strategy. We ensure our customers quality, safety and user-friendly products and it is our motto and dream to serve the earth with the rights of entire humanity and mankind.

SPIDER

NEW  
ARRIVAL



S-01



S-02



S-03



S-04

GALAXY

NEW  
ARRIVAL



G - 01



G - 02



G - 03





Q-01



Q-02



Q-03

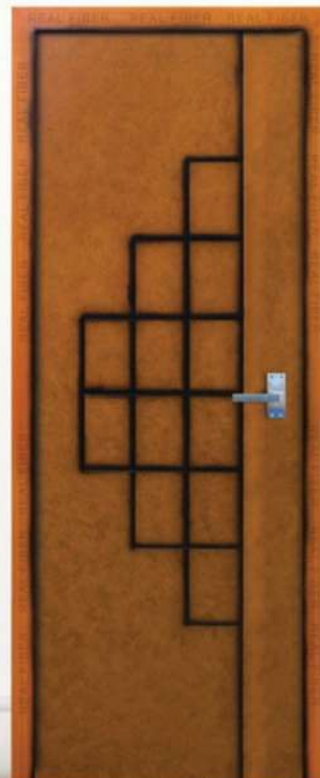


Q-04

NEW  
ARRIVAL



N - 01



N - 02

RECTA

**NEW  
ARRIVAL**



RT - 01



RT - 02





W-01



W-02



W-03



W-04





**NEW  
ARRIVAL**

**CLASSIC**



C-01



C-02



C-03

**FLORA**



F-01



F-02



**NEW  
ARRIVAL**

**ORION D&B**

ROYAL



RY-01



RY-02



## Objectives

- ✓ To become a world famous brand in fibre products
- ✓ To full fill the basic needs of construction with cost effective
- ✓ To be friendly with environment for a lifelong eco friendly
- ✓ To maintain moderate values of life style and status with society

## Advantages

Our Premium Quality products are :

- ✓ Whether Protected
- ✓ Light or Heavy
- ✓ Royal Finish
- ✓ Stylish Perfection
- ✓ Washable & Durable



Under Standard Conditions.

PETRA



P-01



P-02



P-03

ORBIT



O-01



O-02



O-03

MARS



M-01



M-02



M-03



M-04

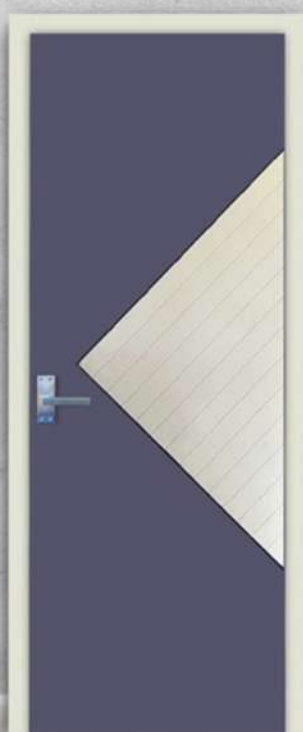


M-05

TRIANGLE



T-01



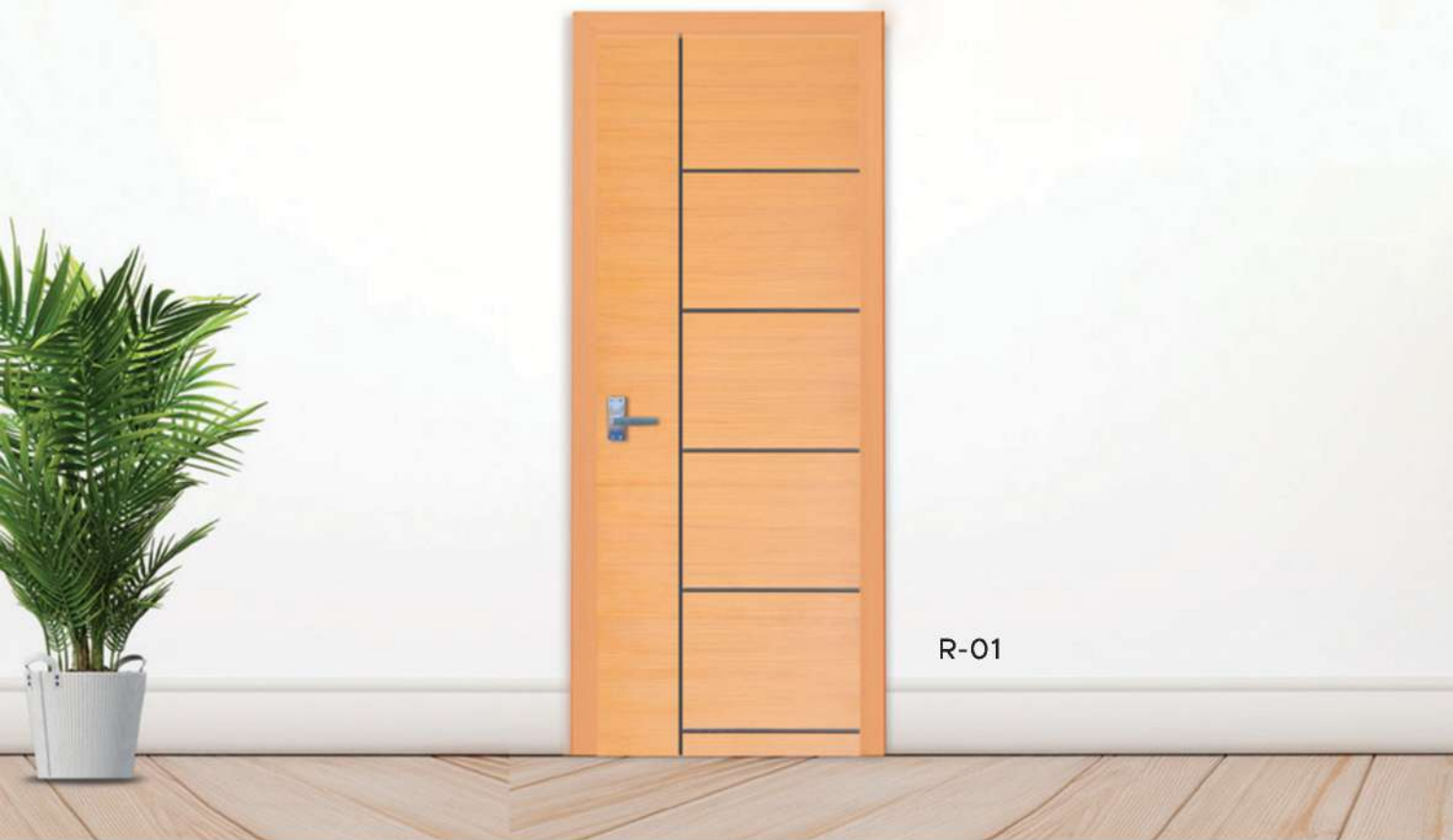
T-02



T-03



RIVERA







R-03

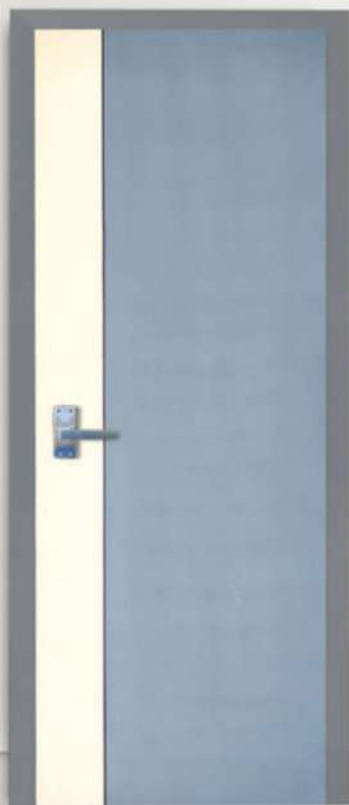


R-04



R-05





REGAL



SPASIO



REGAL



SPASIO

**REGENCY**  
STEEL PROFILE



**RICH MOND**  
STEEL PROFILE





SKILL



SKILL 01



PERIYAR



DELTA



MILTON



WEXCO

VETRIX



V-01



V-02



V-03



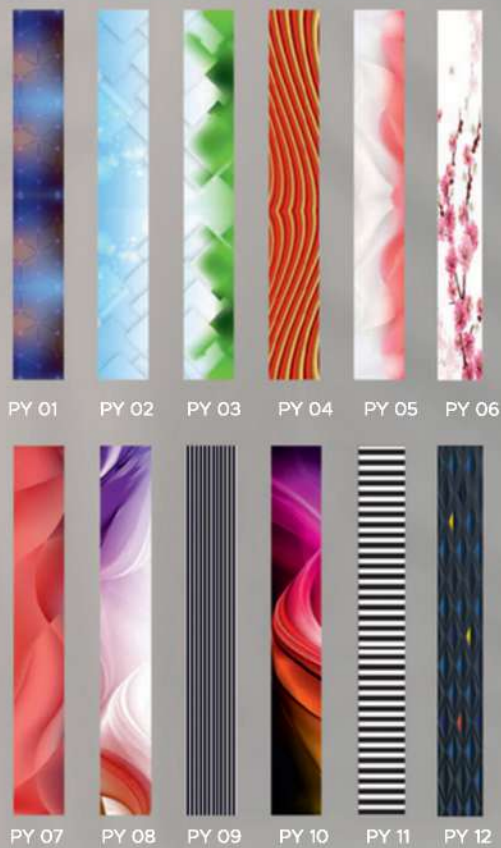
V-04



DELTA



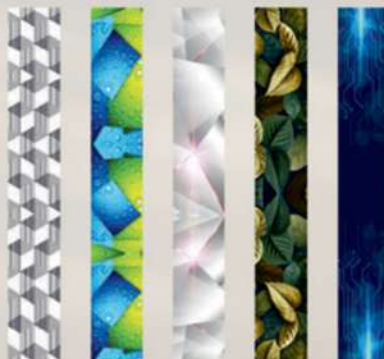
CLOUD



ASTONIA



TB 01 TB 02 TB 03 TB 04 TB 05



TB 06 TB 07 TB 08 TB 09 TB 10

LIVA



AV 01 AV 02 AV 03 AV 04 AV 05



AV 06 AV 07 AV 08 AV 09 AV 10 AV 11



# VENUES



V-01



V-02



V-03



V-04



V-05



V-06



V-07



V-08



V-09







WEXCO  
GLASS



GL 01



GL 02



GL 03



GL 04



GL 05



GL 06



GL 07



GL 08



GL 09



GL 10



GL 11



GL 12



GL 13



GL 14



GL 15



GL 16



GL 17



GL 18



GL 19



GL 20

RECTA  
GLASS





SIMPLON



PK 01 PK 02 PK 03 PK 04 PK 05



PK 06 PK 07 PK 08 PK 09 PK 10

HEXA



XA 01 XA 02 XA 03 XA 04



XA 05 XA 06 XA 07 XA 08 XA 09

VECTOR



TR 01 TR 02 TR 03 TR 04 TR 05



TR 06 TR 07 TR 08 TR 09 TR 10

HORIZON



RZ 01 RZ 02 RZ 03 RZ 04 RZ 05 RZ 06



RZ 07 RZ 08 RZ 09 RZ 10 RZ 11



DOUBLE DOOR





White Dark Grey



Lethar Finish Teakwood Dark



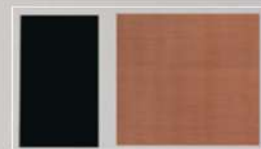
Coffee Teakwood Light



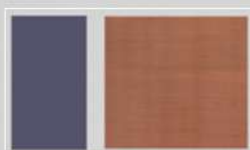
White Eetti



Eetti Teakwood Dark



Coffee Teakwood Dark



Dark Grey Teakwood Dark

Eetti



Std Stain

Teakwood Dark



Std Stain

Teakwood Light



Std Stain



Light Grey Lether



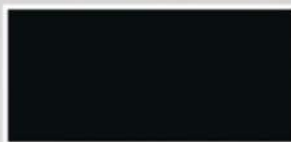
Mahagani



Dark Grey



Green



Coffee



Teak Lether



Off White

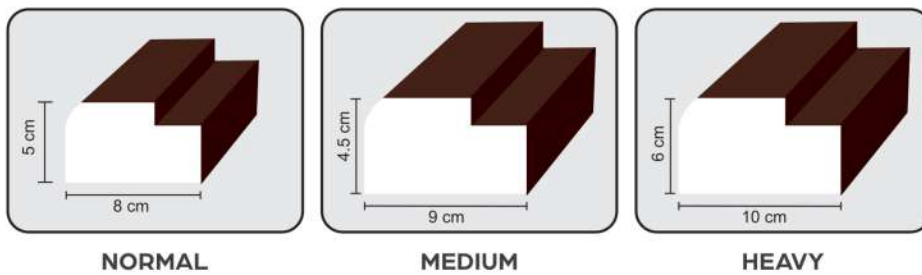


Oak Wood



The colours and shades seen in the brochure may vary from original colours due to the limitations of printing

**DOOR FRAME DIMENSION**



**DOOR FINISH**  
Standard | Stain

**STANDARD SIZE** - 80-210cm

**DOOR SHUTTER DIMENSION**  
Available Length : 1850-2220mm  
Available Width : 600-1050mm  
Door Thickness : 28-30mm



**FRP DOORS & WINDOWS  
FRP SWITCH BOARD CABINETS  
FRP FALL SEALING  
FRP WARDROBS  
FRP MULTI-PURPOSE CABINETS  
FRP VANITIES**



**Low Maintenance and High-performance frame**

- Full length LVL stiles on both hinge and lock sides
- Full length LVL stiles on both top and bottom
- Bacteria, fungus resistant and environmentally friendly

**CFC Free, High density, Polyurethane Foam Core**

- Socyanate and combined polyether
- Sound Dampening
- Adds more strength and stibility

**Factory Painted**

- Waterproof & fireproof
- Anti crack & sound proof

Our fiberglass doors come in stainable, oak, mohogany woodgrain textured finishes and paintable smooth surface

**Manufactured by :**

RKG Fiber Home (India)  
32A, Newyork Tower - B  
Nr. Thaltej Cross Roads,  
Thaltej  
Ahmedabad - 380 054  
Gujarat - INDIA

